

Providing competitive and educational opportunities in  
the equestrian disciplines of Driving, Eventing and  
Dressage

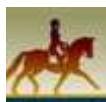
*Equestrians Institute Celebrates 40 Years of Service  
1974- 2014*



**EI Grants Awarded ALL YEAR**  
**EI Grants for Eventing, Dressage, Driving**



**Jan to Oct - EI Board Meetings**  
**Jan 12, Feb 9, Mar 9, Sep 28, Oct 19**  
**Northwest Arts Center, Bellevue WA**



## **Learn to Scribe Seminar**

**February 26th, 2014 \*Wednesday\* 6:30 pm to 9 pm**

**Venue** [Northwest Arts Center](#), 9825 NE 24th St, Bellevue, WA 98004 ~ Studio B

Learn to scribe for dressage shows! You can be the one sitting next to the judge writing up scores and comments- truly an educational experience. Wendy Meyers, past president of EI, will cover protocols, requirements, relevant rules and helpful hints to prepare for the job of scribe. Real time scribing will be practiced as Wendy "judges" sample tests at Training, First, and Second levels. This popular seminar is scheduled early in our dressage Schooling Show season to allow attendees a chance to volunteer and practice their new skills.

Registration is required and space is limited. Please register by Feb 12<sup>th</sup>, 2014 so we can confirm your spot.



## **Dressage Schooling Shows**

**March 16, 2014 ~ March 30, 2014 ~ April 13, 2014**

~ ~ ~

**CONGRATULATIONS 2014 SCHOOLING SHOWS CHAMPIONS!**

***EI members only ~ Champions receive special ribbons and prizes***

**Junior/Young Rider Co-Champions**

**LILLY LINDER on Pele AND MADELYN FLOYD on Charlie Brown**

**Adult Amateur Champion**

**ERICA REAGAN on Franny**

**Open/Pro Champion**

**WHITNEY SHAPIRO on Ramsey**

## **Mother/Daughter Dynamic Duo**

**MICHELLE JACOB on Lexi & AVERY JACOB on Little Miss Sunshine**

~ ~ ~

One day work-out-of-your-trailer schooling show. Beautiful Bridle Trails! Fun classes include Introductory through Fourth Level dressage tests, USEF Rider Tests, USEA Eventing dressage tests Beginner Novice through Prelim, and Western Dressage classes too. Be sure to leave enough time for a nice hack on [the trails at Bridle Trails State Park](#) and enjoy the peaceful old-growth forests.

Remember - WA State Parks require [Discover Pass](#) for motor vehicles!

**Sunday March 16** ~ Judge: Teresa Stewart

**Sunday March 30** ~ Judge: Tija Schmiesing

**Sunday April 13** ~ Judge: Andrea Lucianna

**Venue** [Bridle Trails State Park](#), Kirkland WA

### **Entries**

Open 1 month prior to show, close 1 week prior to show

### **Schooling Show Awards - and Di\$counts**

High Point Awards generously sponsored by *Olsons Tack Shop* and *Gift Horse Saddlery*

With a three-show schooling series, EI is pleased to offer Year End schooling show awards for 2014. Watch the [EI Dressage Awards page](#) for updates and news.

**Entry fee DISCOUNTS for EI members!** EI members pay \$10 less per test -- so that means \$10, \$20, or \$30 off each entry fee. Join EI as a member for eligibility for year-end awards and educational grants, ongoing news and updates, discounts on clinics and other events, and other great benefits.



## **Beginning Driving Clinic - An Introduction to Carriage Driving**

**April 5, 2014**

Are you interested in learning more about carriage driving? We've got the clinic for you! Spend the day (9am to 3pm) at The Driving Training Center and get a first hand introduction to the exciting world of carriage driving. Clinic participants will have the opportunity to observe ground driving, harnessing, and hitching driving horses - and will be given a drive in a carriage. Participants will also receive a carriage driving resource guide.

Entry fee is \$75 per person and EI members receive a \$5 discount.

Contact Diana Axness at [diana@einw.org](mailto:diana@einw.org) or 425-466-4845 for questions or registration for the clinic.

Venue: [The Driving Training Center](#) Snohomish, WA [Directions](#)



## TREC

May 3, 2014

The TREC is back as an Equestrians Institute Driving event. You asked, we listened! This is a one day event. It's a fun and relaxed early season driving event. Yes, there are ribbons at the end of the day - but it's really about enjoy the Northwest driving community and playing with our driving equines. The TREC includes 3 sections: a safety evaluation, a timed cross country drive, and a series of skill tests. The safety evaluation and cross country drive is in the morning and the skills tests are in the afternoon. For more information see the complete details under the Documents section on this webpage.

**Venue:** [Happy Trails Arena](#), Ethel, WA [Directions](#)

### Entries:

**Open Date:** March 17th, 2014

**Close Date:** April 18th, 2014, or earlier if reach maximum number

For more information, see the information in the forms and documents - both information about the event and the entry form are available!



## L'Aperitif Dressage Show

May 18, 2014 -- SUNDAY

*Thank you everyone for coming together for a super show.*

**Congratulations High Point Riders!**

**(Jr/YR) Mckenzie Milburn on Darius riding Third Level Test 1 - 68.158%**

**(AA) Lynne Flaherty on Lacey riding Training Level Test 3 - 73.800%**

**(Open) Anastasia Thayer on Staccato riding Training Level Test 3 - 74.800%**

~ ~ ~

Work-out-of-your-trailer USEF/USDF **recognized** dressage show. Dressage tests offered through 4th Level. Try out USEF Rider Tests to get great judge feedback focused on you! Competitors enjoy this special show venue - beautiful Bridle Trails has super sand/fiber footing that holds up very well to rain. Plan your day so you have time for a [trail ride through the woods](#) too.

L'Aperitif show is a Qualifying Competition for the *USDF Region 6* Regional Championships.

**\*\* JUDGE \*\***

**Deborah Spence**, R/Dressage  
Onalaska, WA

**\*\***

**TD: Barbara Tuohino Funk**, R/Dressage TD, Meas. Cert.  
Battle Ground, WA

\* \*

**Venue** [Bridle Trails State Park](#), Kirkland WA

Remember - WA State Parks require [Discover Pass](#) for motor vehicles!

High Point Awards generously sponsored by **Olsons Tack Shop** and **Gift Horse Saddlery**

**Entries Open: March 17, 2014**

**Entries Close: April 21, 2014**

*Everyone -- carefully read this show's "Prize List" rules document prior to entering show!*

**ONLINE ENTRY RECOMMENDED!** Online entry (EqEntries.com) saves time, looks up membership data automatically, and prevents entry mistakes. Easy, secure credit card payment available.

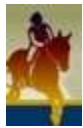
Alternatively, fill out and print the entry form (posted here) and mail with a check to:

Kaye Phaneuf, 9377 S. Barnards Rd, Canby OR 97013

[phaneuf@canby.com](mailto:phaneuf@canby.com) cell 503-880-3892 or fax 503-651-3037

Checks payable to *EQUESTRIANS INSTITUTE*.

*Reminder: to be eligible for EI Year End Awards you must be an EI member at the time the scores were received! Join EI today online or by mailing in printed form easily found on website.*



**May 23-25 USEA Horse Trials**

**Eventing Recognized Show**

**Washington State Horse Park, Cle Elum**

**Equestrians Institute Horse Trials**

May 23-25th at the Washington State Horse Park

EIHT is the kickoff event for the 2014 season in Area VII. We are very excited to offer eventers a top notch event at the Horse Park. Training and Novice level XC will be held on the West course (lower off Woodduck Road) and Beginner Novice and Starter will be on the East course (upper course).

We need volunteers to help us run this event smoothly. Please contact one of the eventing organizers to donate some of your time. We provide great food, gifts and excellent learning opportunity for your time! Here is a link to the volunteer sign up page: [SignUpGenius](#)  
Thanks!!

Thank You to Olson's Tack for being a premiere sponsor of this event. They will have a trailer there at the event to serve all your shopping needs!

**[Link to Omnibus](#)**

**Opening date April 8th**

**Closing date May 6th**

Our show videographer is Moving Images NW. Early signups get a discount!!

<http://www.movingimagesnw.com>

or call: 360-273-5866

**Frequently Asked Questions:**

What dressage test do we ride?

Everyone will ride the new 2014 USEF dressage **test A** for eventing. You can find copies of them on the USEA website.

Will there be the traditional schooling rounds allowed?

No, since we are USEA recognized this time, we will not be hosting our usual casual eventing experience. Our traditional Friday SJ schooling has been eliminated and the show extended to three days to better accommodate more competitors.

What is the difficulty level of the cross country courses?

Moderate difficulty for riders with some experience at this level.

**Ha!!** Dont you just find that oft repeated sentence annoying? Here is a little more useful information: BN and Starter will be held on the same course as EI has held schooling events on for the last three years, the derby field. The track is groomed sandy loam, undulating and some turns around trees. This is not a wide open course in a meadow, but a groomed track that meanders through the pine forest. BN will have a water and introductory ditch.

Training and Novice level will be held on the new competition site off Woodduck Road. This course is very wide, groomed galloping tracks that are mostly on the level. The course is good for galloping. Jumps will be welcoming and inviting for the event at the start of our season.

**Contact:**

Heidi Hansen: [heidi@einw.org](mailto:heidi@einw.org)

Cathie Farr: [mcj-farr@comcast.net](mailto:mcj-farr@comcast.net)

Meika Decher: [meika@einw.org](mailto:meika@einw.org)



## **Chablis & Beaujolais Dressage Shows**

**June 13, 2014 -- Chablis One-Day Show**

**June 14-15, 2014 -- Beaujolais Two-Day Show**

***Congratulations Dressage Show High Score Winners!***

**(Junior/Young Rider) Ashley Combs & Blue Jeans 72.000%**

**(Adult Amateur) Jo Renn & Raven Nevermore 76.129%**

**(Open) Alyssa Pitts & Quintessential Hit 79.483%**

***Congratulations to the DSHB (In Hand) Winners!***

**DSHB Grand Champion - I Candy**

**I-Candy - 2013 Dutch filly, owner Krista Melba, handler Christopher Lewman**

**DSHB Reserve Grand Champion - Go Tango**

**Go Tango - 2011 Dutch stallion, owner Gwen Blake, handler Christopher Lewman**

These are two USEF/USDF recognized dressage shows held over a three-day weekend. All rules in Prize List. These are LEVEL 3 competitions. Both shows have all levels of dressage classes. These shows are Qualifying Competitions for the USDF Region 6 Regional Championships. Oregon Dressage Society members: these shows are ODS-approved.

Official Qualifying Competitions for the 2014 Adequan FEI North American Junior and Young Rider Championships presented by Gotham North, and Official Qualifying Competitions for the 2014 Markel/USEF Young and Developing Horse Dressage Championships presented by HorseShow.com.

**Chablis** has Sport Horse Prospect In-Hand classes (Current Year Foal thru 3 year old), Breeding Stock In-Hand Classes (Mare and Stallion), and Materiale. Chablis is a Qualifying Competition for the Great American Insurance Group/USDF Breeders' Championship Northwest Series Final.

**\*\* JUDGES \*\***

**Hilda Gurney**, S/Dressage, R/DSHB, Young Horse Cert.  
Moorpark, CA

**Jane Weatherwax**, S/Dressage, 4\*/FEI Dressage, Young Horse Cert.  
Petaluma, CA

**Carol Lavell**, R/Dressage  
Loxahatchee, FL

**Jeff Moore**, S/Dressage, 4\*/FEI Vaulting, R/DSHB  
San Juan Bautista, CA

\* \* \*

**TD: Barbara Tuohino Funk**, R/Dressage TD, Meas. Cert.  
Battle Ground, WA

\* \* \*

**Venue:** Donida Farm, Auburn WA Directions  
[Mapquest](#) or [Google Maps](#) 16600 Southeast 376th Street Auburn, WA 98092

**Entries Open: April 14, 2014**

**Entries Close: May 20, 2014**

*Everyone -- carefully read this show's "Prize List" rules document prior to entering show!*

**ONLINE ENTRY RECOMMENDED!** Online entry (EqEntries.com) saves time, looks up membership data automatically, and prevents entry mistakes. Easy, secure credit card payment available.

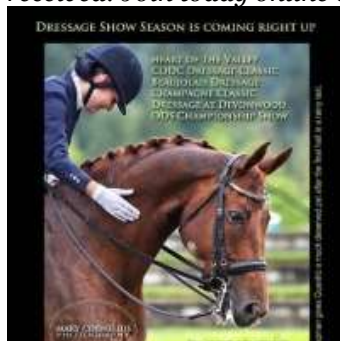
Alternatively, fill out and print the entry form (posted here) and mail with a check to:

Kaye Phaneuf, 9377 S. Barnards Rd, Canby OR 97013

[phaneuf@canby.com](mailto:phaneuf@canby.com) cell 503-880-3892 or fax 503-651-3037

Checks payable to *EQUESTRIANS INSTITUTE*.

*Reminder: to be eligible for EI Year End Awards you must be an EI member at the time the scores were received! Join today online or by mailing in printed form easily found on website.*



## Services Provided

**Photography** ~ please check links for pre-show ordering information. [Mary Cornelius](#) is the show photographer.

**Vendors** ~ the ever-popular vendor village will be there!

**Competitor Party** -- at 3 pm on Saturday, join us for a celebration with free drinks. All are welcome, come support the efforts of local equestrians.

**Informational Booths** -- EI always has a booth and folks floating around happy to answer your questions about EI membership, events, or mission.



**June 20-22 - CDE Schooling/Clinic, Dressage Festival, DT  
CDE Schooling/Clinic, Dressage Festival, and DT  
Happy Trails Arena, Ethel ...**

## **Clinic, Driving Schooling, Dressage Festival, and Driving Trial Everything But the Kitchen Sink!**

Equestrians Institute driving has once again expanded and improved what traditionally has been a schooling weekend. Not only will we include the dressage festival (which was new in 2013) we have added the opportunity to take lessons with clinicians Leslie Berndl and Scott Monroe. In order to fit it all in, the event will now be over 3 days.

Friday and Saturday provides the opportunity to practice all three phases of your combined driving skills - either on your own or by signing up for lesson(s) with our wonderful clinicians. We will have practice dressage arenas, a cones course, and a fully marked section E marathon course with 4 or 5 gated obstacles. This is your chance to experiment and figure out what works best for you and your equine(s).

Also on Saturday is an optional Dressage Festival where drivers can choose which tests they want to drive and compete for ribbon awards.

Sunday will be a one day driving trial with dressage starting in the morning, immediately followed by cones. The marathon phase will be in the afternoon. All three phases will be judged/scored and ribbons will be awarded..

Send in your entries early. Lesson times will be on a first come first served basis.

**Thanks to all of the participants! Results are posted under Forms & Documents!**

**Venue:** [Happy Trails Arena](#), Ethel, WA [Directions](#)

**Entries:**

**Open Date:** April 15th

**Close Date:** June 6th, or earlier if filled

See the Kitchen Sink Info document and entry form for the details about this fun event.

**Volunteering:**

If, however, you prefer to watch this one rather than drive it – you know, so you can learn the ropes -- we'd still love to have you! We're looking for volunteers on Saturday and Sunday to scribe dressage tests. We also need many volunteers on Sunday to set cones to the correct distances, and do timing and observe obstacles on the marathon course. So bring yourself, your spouse, a responsible kid, a friend or a neighbor. We'll provide on-the-job training. Volunteers will receive lunch and our undying gratitude. Please contact Lynne Palmer to volunteer.



## Champagne Classic Dressage Shows

July 12, 2014 -- Champagne/Crystal One-Day Show

July 13, 2014 -- Champagne/Magnum One-Day Show

**CONGRATULATIONS SHOW HIGH POINT WINNERS!**

**Jr/YR Cassidy Stobart on Wapato Gold First-3 66.935%**

**AA Kathryn Lewis on Doemaar First-3 74.839%**

**OPEN Jessica Wisdom on Encore SVS First-3 81.613%**

These are two USEF/USDF **recognized** dressage shows held over a two-day weekend. All levels of classes are offered through Grand Prix. See rules in Prize List.

Champagne shows are Qualifying Competitions for the *USDF Region 6* Regional Championships. These are Level 3 shows. Oregon Dressage Society Members: these shows are ODS-approved.

**\*\* JUDGES \*\***

**Jeanne McDonald**, S/Dressage, 4\*/FEI Dressage, Young Horse Cert.  
Downingtown, PA

**Natalie Lamping**, S/Dressage, 4\*/FEI Dressage, Young Horse Cert., Equitation Cert.  
Ocala, FL

**Barbara Ebner**, S/Dressage, Young Horse Cert.  
Howell, NJ

**\*\*\***

**TD: Dianne Stanley**, R/Dressage TD, Meas. Cert.  
Billings, MT

**\*\*\***

**Venue:** Donida Farm, Auburn WA  
[Mapquest](#) or [Google Maps](#) 16600 Southeast 376th Street Auburn, WA 98092

**Entries Open: May 12, 2014**

**Entries Close: June 17, 2014**

*Everyone -- carefully read this show's "Prize List" rules document prior to entering show!*

**ONLINE ENTRY RECOMMENDED!** Online entry (EqEntries.com) saves time, looks up membership data automatically, and prevents entry mistakes. Easy, secure credit card payment available.

Alternatively, fill out and print the entry form (posted here) and mail with a check to:

Kaye Phaneuf, 9377 S. Barnards Rd, Canby OR 97013

[phaneuf@canby.com](mailto:phaneuf@canby.com) cell 503-880-3892 or fax 503-651-3037

Checks payable to *EQUESTRIANS INSTITUTE*.

*Reminder: to be eligible for EI Year End Awards you must be an EI member at the time the scores were received! Join today online or by mailing in printed form easily found on website.*





## X-Training Clinic with Dom Schramm

August 2-3, 2014

[Polestar Farm](#), Lake Stevens, WA

EI Dressage division is excited to offer a 2 day clinic with Dom Schramm, advanced level event rider and creative talent behind EventionTV. Join us for 2 days of group lessons in cross-training dressage (including ground poles, cavaletti, hills and other non-arena work), stadium jumping and x-country. Lessons \$150 each. Day stalls include initial shavings, byobag for the second night.

Hosted by [Polestar Farm](#), 15531 64th St NE, Lake Stevens, WA 98258

### Creative Cross Training for YOU

Equestrians Institute Dressage is kicking off a new clinic season with a cross discipline, cross training clinic featuring Dom Schramm in his first time visiting the Pacific Northwest! Dom is the creative talent behind EventionTV, a free online YouTube series that blends practical training videos with pure comedy, yes he's the one with the Drezage Skillz that gave them judges Chillz! He is well known as an advanced level professional 3 day event rider but also trained at one of the largest stallion stations in Germany, Hengsthaltung Hathmann. There he prepared the young stallions for approval, riding the sale horses and competing at the Bundeschampionate. Dom has said the experience taught him, "the value of a systematic way of training balanced out with dealing with each horse as an individual". He is a popular clinician for his work with young or green horses as well as providing creative solutions to basic training issues that arise at home or in competition.

Dom's enthusiastic teaching style will provide a novel opportunity to cross train your dressage horse, in the arena using ground poles and cavaletti or outside the arena using hill work and other natural obstacles to enhance your training in a fun and relaxed atmosphere. Of course he will also be available for the event riders too. Lessons will be in groups of 4 and offered in dressage, x-training dressage, stadium and x-country. The clinic will be held at the wonderful combined training facility, [Polestar Farm](#). All levels and ages are welcome with special discounts to EI members.



## Equestrians Institute Combined Driving Event

August 8-10, 2014

This American Driving Society approved event will be held at Happy Trails Arena in Ethel, WA. Training, Preliminary, Intermediate, and ADS Advanced divisions will be offered and all size equines from minis to drafts, and size turnouts, from singles to four-in-hand, are welcome to enter. **Event Info/Omnibus and Entry Form are available under Forms and Documents!**

**Venue:** [Happy Trails Arena](#), Ethel, WA [Directions](#)

### Entries:

**Open Date:** June 1st

**Close Date:** July 22nd, or when we reach 60 entries

See the documents and entry form for more information.

**Volunteering:**

If you prefer to watch this one rather than drive it – you know, so you can learn the ropes -- we'd still love to have you! We're looking for volunteers for all three days - dressage scribes and stewards on Friday, marathon timers and obstacle judges on Saturday, and cone setters/scribe/timers on Sunday. So bring yourself, your spouse, a responsible kid, a friend or a neighbor. We'll provide on-the-job training. Volunteers will receive lunch and our undying gratitude. Please contact Lynne Palmer to volunteer. [lynnepalmer@einw.org](mailto:lynnepalmer@einw.org)



## Equestrians Institute Driving Trials Back to Back

**September 13-14, 2014**

Please join us for this fun end of the season driving event to be held at Happy Trails Arena in Ethel, WA. A driving trial with all three phases (dressage, cones, and marathon) will be held on both Saturday and Sunday.

**For more information, see Event Info and Entry Form under Forms and Documents!  
RESULTS ARE POSTED UNDER FORMS AND DOCUMENTS!!!**

**Venue:** [Happy Trails Arena](#), Ethel, WA [Directions](#)

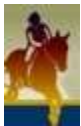
**Entries:**

**Open Date:** July 15th

**Close Date:** September 2nd - earlier if fills

**Volunteering:**

If, however, you prefer to watch this one rather than drive it – you know, so you can learn the ropes -- we'd still love to have you! We're looking for volunteers to scribe dressage tests, set cones to the correct distances, and do timing and observe obstacles on the marathon course. So bring yourself, your spouse, a responsible kid, a friend or a neighbor. We'll provide on-the-job training. Volunteers will receive lunch and our undying gratitude. To volunteer, please email Mary Decher, [mary@einw.org](mailto:mary@einw.org), or Lynne Palmer, [lynnepalmer@einw.org](mailto:lynnepalmer@einw.org).



## September One Days and CT

**When:** September 27-28th

**Where:** Washington State Horse Park

**What:**

**Saturday 27th:**

One Day Event for BN and Starter on the East Course  
Combined Tests for Novice, Training, Preliminary and Intermediate  
Schooling opportunities for all options available

**Sunday 28th:**

One Day Event for Novice and Training on the West Course

Combined Test for Starter, BN, Preliminary and Intermediate  
Schooling opportunities for all options available

100 Stalls available for whole weekend or individual nights. Please specify on entry form.  
5% discount available for all EI members!!



**October 11-12 - Clinic with Jeff Moore**

## **J Ashton Moore Clinic**

### **BioMechanics Clinic**

*Systematic ~ Kind ~ Insightful*  
*Based on Physical & Behavioral Sciences*

**Sat & Sun October 11-12, 2014**  
**Bear Creek Farm, 13651 Bear Creek Rd NE, Woodinville, WA**

**plus! Friday evening October 10**  
**Kick-Off Lecture and Wine Tasting**

EI is excited to welcome J Ashton (Jeff) Moore, USEF "S" Dressage Judge, back to the Pacific Northwest as a clinician. Have you ever wondered what to make of judges' comments like "need more engagement" or "stiff back"? Jeff can help you to understand such comments, since as author of the *USDF Judge's Handbook* he literally wrote the book on these terms!

During an illustrious 50-year career, Jeff brought 20+ horses to Grand Prix, and has judged dressage, hunters, jumpers, driving, sport horse, and vaulting. He is a pioneer in the field of rider and horse biomechanics, and draws on the physical and behavioral science disciplines for creative, humane alternatives to "drive & hold" riding. He says that a better understanding of how horse and humans function - independently and together as a "centaur" - encourages more insightful, systematic and kinder training methods as well as more knowledgeable judging.

This two day clinic will kick off with a lecture and wine-tasting party at a local Woodinville winery on Friday evening. It will be geared to all levels of dressage and eventing riders. Each day will begin with a short lecture on biomechanics, continue with eight rides and end with a question and answer session.

***As always, EI Members receive valuable discounts on educational events!***

~ ~ ~

***Friday Eve Lecture & Wine Tasting at a local winery***  
***Location to be announced soon!***  
*\$20 EI Members, \$40 Non-Members, Under 21 Free*

***Saturday & Sunday Clinic, Bear Creek Farm, Woodinville WA***  
*Rider - EI Member \$125 per day*  
*Rider - Non-Member \$150 per day*  
*Stabling is available per day \$20 daystall or \$35 overnight*

*Auditor - EI Member \$25 one day/ \$40 both days*  
*Auditor - Non-Member \$50 one day/ \$80 both days*

**See Registration Form for More Details**  
**Please fill out form and mail check to EI to secure your space**



## **EI Holiday Bazaar & Annual Meeting**

**November 8, 2014 -- SATURDAY**

### **EI Holiday Bazaar & Tack Sale -- 9 am to 11:30 am**

All are welcome to browse flea-market style tables of treasures! Find gifts for horses, barns and people. New this year - crafts, food items, and art welcome too. **CASH ONLY.**

*Got stuff to barter, give away, or sell? Reserve table space ASAP! Table space limited, sign up required. You bring items, arrange items on the table, and manage your own sales. Afterwards you can choose to make a \$\$\$ donation to Equestrians Institute, or not. Contact Susan Napier [shnapier@hotmail.com](mailto:shnapier@hotmail.com) to reserve your space!*

### **Lunch -- 11:30 am to Noon**

Complimentary sandwiches, coffee, and cookies.

### **Annual EI Business Meeting -- NOON**

Members-only meeting to discuss an overview of the year's events including finances. Presentation by each Division. Election of next year's Board of Directors.

### **THANK YOU 2014 Board of Directors**

*Rebecca Chatfield (Pres), Lori Fleming (VP), Gunn Cooper (Treas), Alison Moss (Sec), Lynn McGrew (Dressage), Meika Decher (Eventing), Diana Axness (Driving), Penny Leggott (Eventing), Sarah Johson (Driving)*

**Venue** Northwest Arts Center, 9825 NE 24th Street, Bellevue WA